

# LP-Series Reverse Osmosis Systems

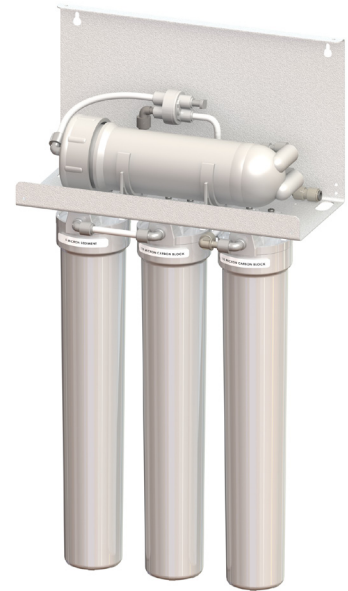
**AXEON LP-Series Commercial Reverse Osmosis Systems** are engineered in response to the need within the light commercial market for a pump-less system. Relying solely on line pressure, the LP-Series systems provide lower operational costs for your customers and are easy to install and maintain. These systems are designed to be wall-mounted and feature 20" slim line filters and housings and AXEON membranes and vessels. The LP-Series is available in models that produce 350 and 700 gallons per day (at a line pressure of 70 psi). The models can also be upgraded with a cover that includes AXEON pressure gauges and a 20" floor stand.

## Standard Features

- Pentek® 20" Slim Line Filter Housings
- AXEON® TF 3012-500 Line Pressure RO Membrane Element
- AXEON® 3012 Membrane Housing
- John Guest® Push/Pull Fittings with Locking Safety Clips
- 3/8" Automatic Shut Off Valve
- External Storage Tank Port

## Options and Upgrades

- 20" Floor Stand
- HM Digital® DM-2 TDS Meter
- Cover with AXEON Glycerin-Filled Pressure Gauges Including:
  - Post-Filter Pressure Gauge
  - Operational Pressure Gauge
  - Permeate Pressure Gauge
- Cover without Pressure Gauges



**AXEON LP-350  
Reverse Osmosis System**



**AXEON LP-700  
Reverse Osmosis System  
with Optional Cover  
with Pressure Gauges**

Engineered Membrane Solutions



# LP-Series Reverse Osmosis Systems

## Product Specifications

Design	LP-350	LP-700
Configuration	Single Pass	Single Pass
Feed Water Source (ppm)	TDS < 250	TDS < 250
Standard Recovery*	40%	40%
<b>Rejection and Flow Rates</b>		
Nominal Salt Rejection	96%	96%
Nominal Permeate Flow*	0.25 / 0.95	0.5 / 1.9
Nominal Concentrate Flow (gpm / lpm)	0.38 / 1.43	0.75 / 2.85
<b>Connections</b>		
Feed (in)	3/8 Tube	3/8 Tube
Permeate (in)	3/8 Tube	3/8 Tube
Concentrate (in)	3/8 Tube	3/8 Tube
<b>Membranes</b>		
Membrane Per Vessel	1	1
Membrane Quantity	1	2
Membrane Size	3012	3012
<b>Vessels</b>		
Vessel Array	1	2 (Parallel)
Vessel Quantity	1	2
<b>System Dimensions</b>		
L x W x H (in / cm)	17 x 7.5 x 29 / 43.2 x 19 x 122.7	17 x 7.5 x 29 / 43.2 x 19 x 122.7
Weight (lb / kg)	35 / 15.8	38 / 17.1

\* Product flow and recovery rates are based on feedwater conditions of 250 TDS at 77°F at 70 psi. Treatment ability of the RO system is dependent on feedwater quality and feed pressure. Higher TDS and/or lower temperatures and/or pressure will reduce product flow.

## Operating Limits

Design Temperature	77°F	Max. Turbidity NTU ^	1
Max. Feed Temperature	85°F	Max. Free Chlorine ppm	0
Min. Feed Temperature	50°F	Max. TDS ppm	250
Max. Ambient Temperature	120°F	Max. Hardness GPG ^^	1
Min. Ambient Temperature	40°F	Max. pH (Continuous)	11
Max. Pump Inlet Pressure psi	85	Min. pH (Continuous)	3
Min. Pump Inlet Pressure psi	45	Max. pH (Cleaning 30 Min.)	12
Max. SDI Rating	<1	Min. pH (Cleaning 30 Min.)	2

**Test Parameters:** Static pressure tested.

^ Appropriate Pre-filtration must be installed in order to prevent premature membrane fouling.

^^ Scale prevention measures must be taken to prolong membrane life.